

Vertical Blind

Installation Instructions

Please read the following installation and operating instructions carefully. We are unable to accept responsibility for products that have not been installed or operated correctly.

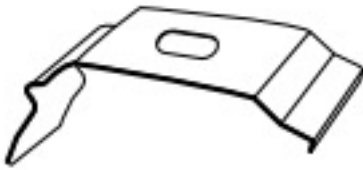
For this installation will need **a pencil, drill, screwdriver, pliers, and appropriate fasteners.**

Choose The Correct Fasteners For Installation

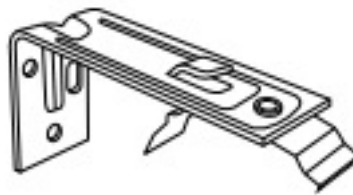
Wooden screws are included. Alternative fasteners should be used for aluminum or concrete installations
(Not Included with Blinds)

- For wallboard or plaster: Use hollow wall anchors for added support. For concrete, stone, brick or tile: Use an appropriate drill and appropriate anchors before fastening the screws
- For metal surfaces: Pre-drill holes and use and appropriate anchors before fastening the screws.

Recess Fit Bracket



Exact Fit L Shape Extension

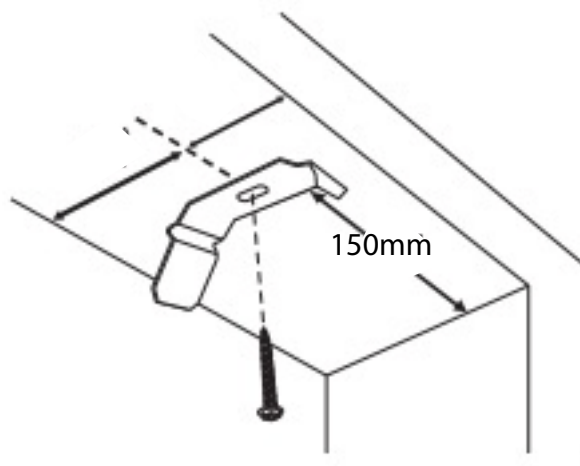


Mounting brackets

*Quantity: 2 or more depending
on width of blind*

RECESS

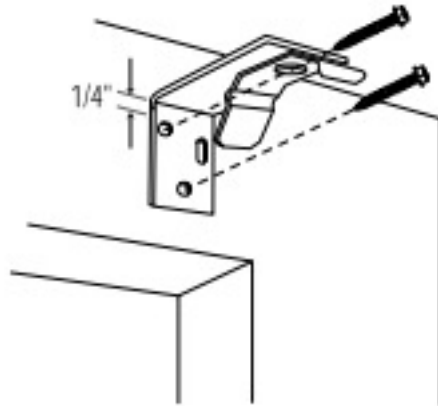
Position the brackets on the mounting surface, approximately 150mm in from each end of the track position,



THANK YOU FOR SHOPPING WITH US
WWW.BESTBLINDS.CO.NZ

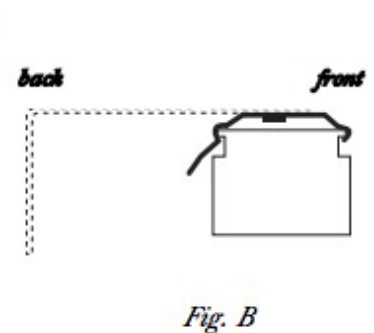
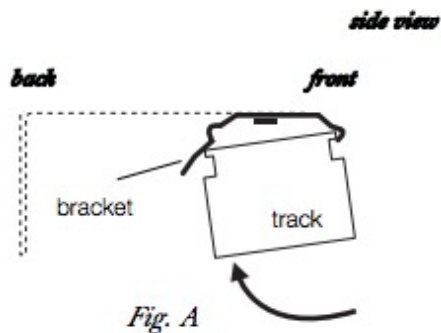
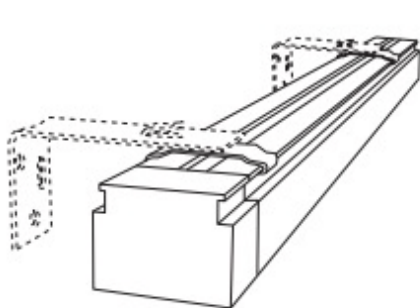
EXACT FITTING (EXTENSION BRACKET)

Position the brackets on the mounting surface, approximately 150mm in from each end of the track position,



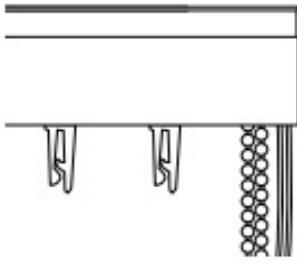
FITTING THE TRACK TO THE BRACKETS

1. Insert the front part of the bracket inside the top front groove of the track (Fig. A).
2. Push the back up so it snaps into the bracket (Fig. B).

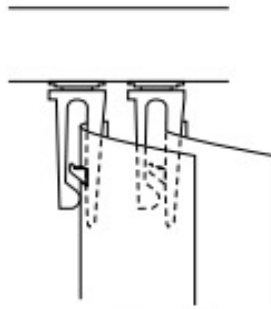


PLACING THE BLADES TO THE TRACK

1. Before installing the vanes, make sure the carriers are positioned as in Fig. A.
2. Insert the vanes into the carriers. Make sure all the vanes are facing the same direction (Fig. B or C).



(Fig. A)



(Fig. B)

or



Fig. C)

To remove the vanes, first rotate the carriers to the open position as illustrated here. Then slide a card between the vane and carrier clip to open the carrier sufficiently and remove the vane (Fig. D).

